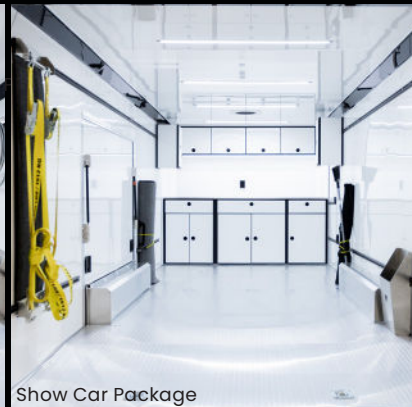


Race Package



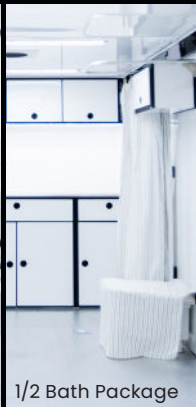
Show Car Package



Motorcycle Package



Relax Package



1/2 Bath Package

AVAILABLE SIZES

8.5' x 20' - 5.2k	8.5' x 24' - 6.0k
8.5' x 24' - 5.2k	8.5' x 28' - 6.0k

EXTERIOR COLORS



Polar White Black Silver Frost Med Charcoal Light Pewter

ALL NEW AND READY TO CUSTOMIZE

The Rōm 500/550 is our heavy-duty car hauler. The 550 unlocks the ATC LifeTrac wall design that allows you to add, rearrange, and remove components to customize your hauler just how you want it. And, of course, durability and reliability are always standard on any ATC product. The ceiling, walls and floor are all welded using state-of-the-art weld tables that ensure precision alignment of all support members. The result is the ideal carriage for your race car, show car, or your weekend toys.

RōM Performance-Driven, Passion-Fueled

- STANDARD ON ALL RōM 500/550 MODELS:**
- 10 Year structural warranty
 - Full perimeter aluminum frame with all-tube aluminum construction
 - 16" On-center floor and roof cross members
 - .040 Screwless aluminum exterior
 - Full perimeter skirting
 - Rear spoiler with back up lights

STANDARD FEATURES

Frame

- Aluminum Tube Construction
- 6-Sided Welded Frame
- 10-Year Structural Warranty
- Extended Triple Tube Tongue - 56"
- 16" O/C Floor Crossmembers
- 16" O/C Wall Crossmembers (500)
- ATC Cross-Grid Wall Technology (550)
- 16" O/C Roof Crossmembers
- 2" x 5" Sub-frame Tubing (20' - 24')
- 2" x 8" Sub-frame Tubing (28')
- Awning Prep
- Rear Spoiler with (3) LED & Backup Lights
- Polished Cast Corners with Stainless Steel Trim
- Spread Axles with Full Perimeter Skirt

- Beavertail Floor
- Winch Plate
- Mechanical**
- Torsion Axles
- ST 225 or 235 Aluminum Wheels
- Entrance Door - 36" (20' - 24') or 48" (28')
- Safety Chains & A-Frame Coupler
- 5,000 lb Manual Jack
- 4,000 lb Ramp Door
- Ramp Transition Flap
- Stainless Steel Rear Paddle Locks
- (3) 16" Slimline Tail Lights Diagonal
- (1) 16" Slimline Reverse Lights
- (4) Recessed D-Rings
- (2) Manual Roof Vents

Other Construction Detail

- One-Piece Aluminum Roof
- .040 Screwless Aluminum Exterior
- 24" Stone Guard
- 3/8" Engineered Walls with Cove
- 3/4" Engineered Floor
- Open Stud Ceiling
- (2) Dome Lights with Wall Switch
- 7" Lower and 4" Upper Trim
- Stainless Steel Rear Header and Verticals
- Röm 550 Series Features**
- LifeTrac Modular Track System (Patent Pending)
- (2) Window Prep Locations (RS/CS)
- (2) 12V USB Cove Ports

PACKAGES + OPTIONS

Premier Package

- Aluminum Ceiling (.030 White) & Spg Cover (Black)
- Aluminum Walls - White or Dove Grey
- Premium Escape Door
- 50 Amp Electrical Package
- Aluminum Slide Out Step
- Insulated R3 Walls/R6 Ceiling
- 40" Tall Carpet on Walls
- (2) Bogey Wheels
- Tongue Storage Compartment
- * Required Choice of Cabinet Package

Plus Package

- Aluminum Ceiling (.030 White) & Spg Cover (Black)
- Aluminum Walls - White or Dove Grey
- Premium Escape Door
- 30 Amp Electrical Package
- Aluminum Slide Out Step
- * Required Choice of Cabinet Package

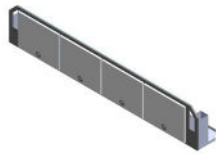
Black Trim Package

15, 30, or 50 Amp Electrical Package

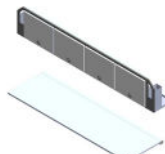
For a full list of packages and options, visit ATCtrailers.com



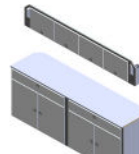
CABINET PACKAGES



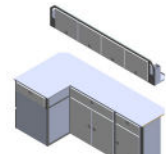
Cabinet Package #1
Upper



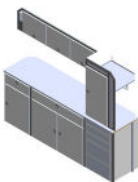
Cabinet Package #2
Upper w/ Fold-Down Counter



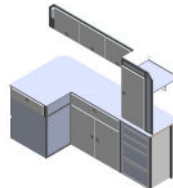
Cabinet Package #3
Upper & Lower



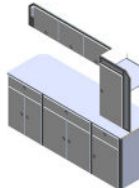
Cabinet Package #4
Upper & L-Base/Gen Door



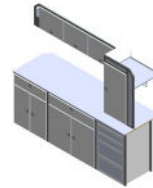
Cabinet Package #5
Upper & Lower w/ Dress/Drawer



Cabinet Package #6
Upper & L-Base/Gen Door w/
Dresser/Drawer



Cabinet Package #7
Upper & 30" Lower w/ Drawer &
Storage Box Door/Slide



Cabinet Package #8
Upper & 30" Lower w/ Drawer &
Storage Box Door/Slide w/ Dresser/
Drawer

MODULAR PACKAGES

Race Package

- (4) Single Coat Hooks
- (8) Wall Ties
- Premium Strap Holder
- Floor Jack Holder
- Dual Helmet Holder
- (2) Fuel Jug Holders
- Door/Wall Caddy
- Cord Hanger

Show Car Package

- (8) Wall Ties
- Premium Strap Holder
- Floor Jack Holder
- (2) 12" x 24" Upper Cabinets- Poly Door

Relax Package

- Roll Over Sleeper Sofa
- 30" Interior/Exterior Fold Table
- Cup Holder

Off-Road Motorcycle Package

- (1) Fold-Down Bench
- (1) Double Helmet Holder
- (2) Angle Wheel Chocks
- (1) Premium Strap Hanger
- (8) Eyebolt Anchors
- (2) 18" x 24" Upper Cabinets w/ Poly Doors
- (1) Deep Floor Bin
- (1) Door/Wall Caddy - Mini

Half Bath Package

- 12v Dry Flush Toilet
- Upper Cabinet w/ Privacy
- Portable Privacy Tent
- Lower Sink Cabinet

Modular Catalog

Additional modular options at ATCtrailers.com

The depictions of car haulers in this brochure are for general information purposes only as to those manufactured by ATC during the current model year. Since we continually strive to improve our products, actual products may differ and prices and specifications are subject to change without notice. Product information, specifications, photography, and promotions in this brochure may contain some features that are optional on your car hauler. All capacities are approximate and dimensions are nominal. Availability may be limited. ©2025 ATC 2025-04-09