



STO 350

ADVENTURE
CARGO HAULER



GO YOUR OWN WAY

Sizes **12', 14'** Base models **2**

Towable with
Mid-Size SUV / Compact Truck



A CARGO TRAILER READY FOR ADVENTURE

Stow. Go. Relax. An incredibly versatile hauler, the Stō 350 can convert from a pure cargo hauler to an adventure trailer with ease. With its upper and lower configurable tracks, you can quickly add optional cabinets, shelves, tables and a reclining sofa bed. Other add-on options include sink, toilet with privacy, microwave, rooftop air conditioner, heater and more. And there's plenty of space to bring along your side-by-side, ATV, dirt bikes or other toys. When you're done hunting or riding, just kick back and relax.

KEY FEATURES

Two Trailers in One

A cargo trailer when you need it and an adventure trailer when you're ready to go.

Easy Towing

Lightweight, aluminum frame makes towing easy with a mid-size SUV with minimal wear on the vehicle.

Secure Cargo

Nine flush mount airline track locations fastened directly to the frame, each with 1,200 lbs. capacity.

Ultra Wide Ramp

Ramp door and wide trailer opening make it easy to load large cargo and bigger toys.

Excellent Resale Value

Highest resale value in its class.



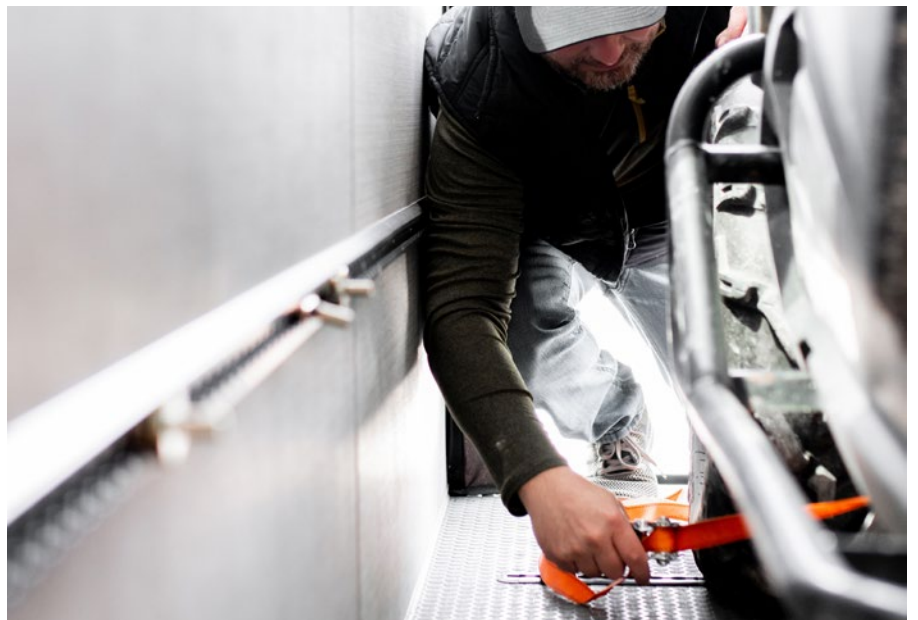
CONVERTS FROM CARGO HAULER TO ADVENTURE TRAILER

Stō 350's versatile upper and lower configurable tracks allow you to attach shelves, cabinets, tables, sofa/bed, sink, drawers, and a toilet with privacy in any configuration that works for you at that moment. Remove furniture for maximum cargo capacity or include all elements for more living space. This level of versatility and flexibility is key to our design and to your enjoyment.



ROOM FOR CARGO OR TOYS

Fold up or remove furniture to maximize space for cargo or toys. Use tie downs to securely store cargo in the rear area. A 76" wide rear opening means there's space to load many two-seat, side-by-sides.



TIE DOWNS/WALL TRACK

You can secure your cargo easily with (9) flush mounted airline segments in the floor. Fastened directly to the frame, each floor mounted track has a 1,200 lb. capacity. Tie downs on the floor hold toys and cargo securely during travel. The wall track provides additional ways to secure cargo against the wall.

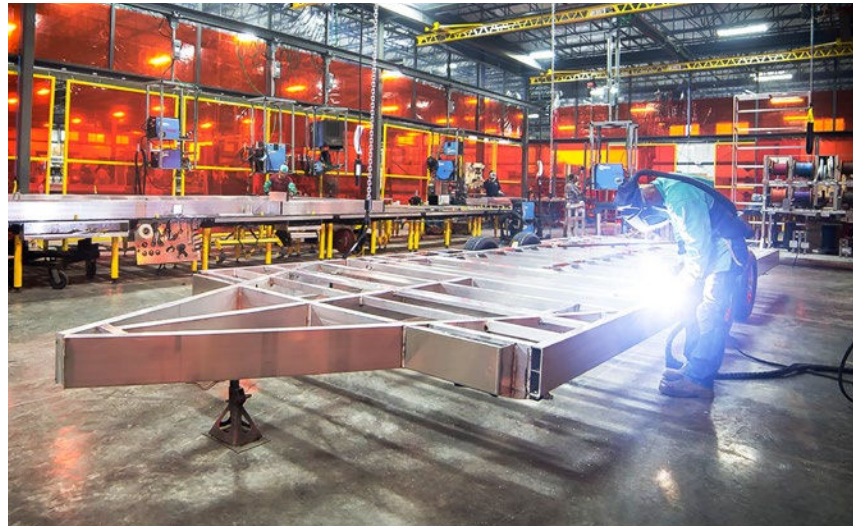


CUSTOMIZE WITH OPTIONS

With our ever-growing list of options, you can add a sink package, toilet with privacy, microwave, a roll-over sleeper sofa, cabinets, electrical package, and even air conditioning and a heater. Because it's easy to add and remove options, you can customize it for any trip. There's no need to get everything all at once; more any time you're ready.

A STANDARD OF EXCELLENCE

All ATC products are built for a lifetime of use to the highest fit, finish and function standards in the industry. We start the construction of every trailer with a welded, full-perimeter, six-sided, aluminum frame. There are no fasteners to come loose over time. Our trailers are lighter but nearly twice as strong as RV industry standard steel frames. As a result of our efforts, ATC is able to offer a 3-year structural warranty, and our trailers have the highest resale value in their class.



12' MODEL

Exterior Length (Includes Hitch)	16' 5"
Interior Dimensions (L x W x H)	13' x 6' 5" x 6' 6"
Ramp Door Opening (W x H)	76" x 75"
Deck Height	20"
Gross Vehicle Weight Rating (GVWR)	3,850 lbs
Estimated Curb Weight	1,600 lbs
Estimated Carry Capacity	2,050 lbs
Estimated Hitch Weight	200 lbs *
2" Coupler	5,000 lbs
Axle Size	1 x 3,500 lbs
Tire Size	205/75R15

14' MODEL

Exterior Length (Includes Hitch)	18' 5"
Interior Dimensions (L x W x H)	15' x 6' 5" x 6' 6"
Ramp Door Opening (W x H)	76" x 75"
Deck Height	20"
Gross Vehicle Weight Rating (GVWR)	5,000 lbs
Estimated Curb Weight	1,800 lbs *
Estimated Carry Capacity	3,000 lbs *
Estimated Hitch Weight	200 lbs *
2" Coupler	5,000 lbs
Axle Size	1 x 5,200 lbs
Tire Size	225/75R15

