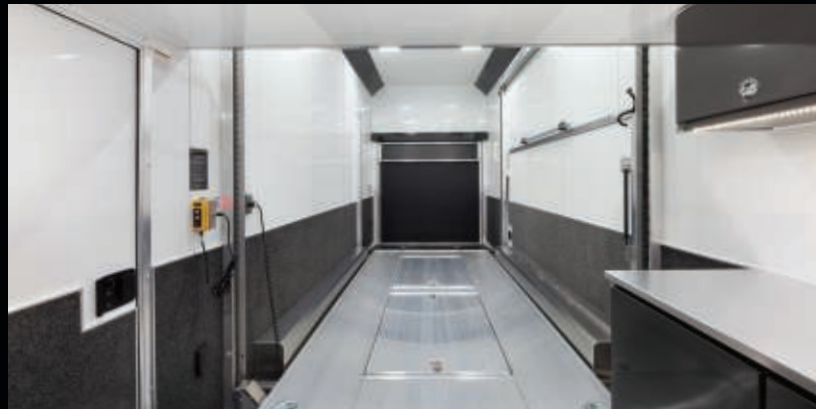




RōM 26' – 900 Series

Built for the Long Haul

The RōM Stacker is our premium stacker car hauler, and we've loaded it with the features you need most. The chassis is fully welded, using state-of-the-art weld tables that ensure precision alignment of all support members. It's the optimal way to transport your treasured racing vehicles, classic collectibles or weekend toys.



GO YOUR OWN WAY

Go where you want and bring what you want. No matter how often you hit the road or what you decide to bring along on any given trip, the RōM Stacker will get you there. It's equipped with plenty of space and storage so you can haul multiple vehicles, including cars, ATVs, motorcycles and other toys. Available in several lengths; shorter models ideal for hauling behind an RV.

Details at ATCtrailers.com

STANDARD ON ALL STACKER MODELS:

- All-aluminum chassis for lightweight towing
- Best lift on the market; aluminum tilt deck with integrated airline tie-down track
- Welded front attic storage loft
- All-aluminum cabinetry, ceiling, and wall covering
- Hardwired for back-up camera

(See reverse side for a complete list of features and options.)

BASE MODELS

- 8.5 x 22' w/(2) 7000# Torsion Axles
- 8.5 x 24' w/(3) 6000# Torsion Axles
- 8.5 x 26' w/(3) 6000# Torsion Axles

COLORS

Exterior



Polar White Black

Interior Wall & Ceiling



Polar White

Spring Box & Cove



Black

Cabinet Doors



Black White Medium Charcoal Light Pewter Metallic

STANDARD FEATURES 800 SERIES – 22', 24', 26'

Frame

- Spread Axle
- 16" Wheel – 8 Lug Aluminum Rim
- Extended Tongue
- 16" O/C – Sidewalls
- 16" O/C Floor – Chassis
- 16" O/C 1" x 2" – Roof Members
- 6000# Rear Ramp Door
- Transition Flap – 16" Black Coin Flooring
- Stainless Steel Rear Paddle Latches (On Ramp Door)
- Bogey Wheels
- 4-Bolt Coupler – Flat Front Tongue
- Winch Plate
- Interior Height 11' 4"
- Pod Jacks – Stabilizing
- Spare Tire Mount Backer (Attic roadside - front)
- Girard Lateral Arm Prep for 20' Awning
- Hydraulic Tongue Jack

Exterior

- ATP Gravel Guard (48")
- Screwless Exterior (0.050") Metal
- One-piece Aluminum Roof
- DOT Tape
- Cast Corners – Polished
- Upper & Lower Trim – 4"
- Stainless Steel Front Corner & Top Radius Trim

Exterior (cont.)

- Stainless Steel Rear Vertical Corners
- Brushed Fenderettes
- Mid Ship Lights & Turn Signals
- Color Matched – Rear Header
- Wired Rear Camera Prep – Voyager

Interior

- Black TPO Floor & Ramp
- Aluminum Walls & Ceiling - (0.030) - White
- 0.125" ATP Attic
- Attic Tiedowns – 4-Rope Rings
- 36" Entry Door – 22' & 24' Model
- 48" Entry Door – 26' Model
- Slide-in/Slide-out Step
- Upper & Lower Cabinets
- LED Strip Lighting (Under cab & lift)
- Premium Escape Door – 72"
- Stacker Cove – Black
- 15 Amp Exterior Motorbase w/Interior GFCI & (1) Recept
- 55 Amp Converter/Charger
- (2) 14" LED Light – Under Attic w/Switch
- (2) AGM Batteries
- (6) 14" LED Ceiling Lights – (2) 3-Way Switches
- 14' Stacker Lift w/Removable Inserts
- Stacker Lift Control – Wall Mounted Front & Rear

900 SERIES ADDITIONAL FEATURES – 22', 24', 26'

- | | |
|--|--|
| <ul style="list-style-type: none"> Perimeter Skirting Polished Fenderettes Lower Trim – 7" 50 Amp Breaker Box w/ 60 Amp Converter Power Cutoff Switch – Manual (3) Interior Outlets – 15 amp (1) Exterior Outlet – 15 amp Wall Airline Track Segment | <ul style="list-style-type: none"> Attic Tie Downs – 2 Rows A-Track (4) Floor Mounted Swivel D-Rings Stainless Steel Rear Header and Spoiler (2) Exterior Curbside Scene Lights (3) AGM Batteries In Floor Battery Box – (3) Batteries Exterior Docking Lights 40" Bedrug – Interior Sidewalls |
|--|--|

High Visibility Light Package:

- (1) Pair Backup Lights Diagonal - Ramp Door
- (2) Pair Tail Lights Diagonal – Ramp Door
- (3) Pair Tail Lights Diagonal – Rear Header
- (2) Extra Clearance Lights – Lower
- (4) Extra Clearance Lights – Upper