



FIFTH WHEELS 500 & 700 SERIES



STANDARD FEATURES

EXTERIOR

- Hydraulic Leveling System • RotoFlex Pin Box
- Power Awning w/Light Strip • Entry Door w/ Tinted Window w/Friction Hinge • Large Stainless Steel Fold-out Grab Handle • Fold-out Adjustable Step • Cableless Rear Ramp Door w/Non-slip Tread • Large Exterior Pass-through Storage
- Fuel Filling Station • Loading Lights at Ramp Door • RVIA Seal

INTERIOR

- 8' Minimum Interior Height • Fiberglass Batten Insulation in Attic (R-11) • Blackout Roller Shades • (1) Dinette w/Benches (Sleeper) • (1) Sofa (Sleeper) • All Aluminum Cabinets & Drawers Throughout (No wood)

ELECTRICAL

- Energy Package 1000 (200 Watt solar panel 1000 watt inverter, 30 amp mppt charge controller) • Generator Prep • (2) Battery Prep
- High Definition 120v Smart TV • TV Prep in Bedroom • TV Prep Exterior • HD Digital TV Antenna w/WiFi Prep • Stereo AM/FM/Bluetooth w/Interior & Exterior Speakers • Touchscreen User Control Panel • Back-up Camera Prep
- 120v USB Power Outlets Throughout

PLUMBING

- DSI LP Gas/Electric Water Heater • Ducted LP Furnace • 12v Water Pump w/Winterizing Tap
- City Water Hook-up w/Fill • 20' Sewer Hose w/Storage Tube • Waste (Black) Tank Flush
- Exterior Water Spigot

KITCHEN

- Convection Microwave • Farmhouse Single Bowl Stainless Steel Sink • Sink Insert 1/2 Solid Surface, 1/2 Stainless Steel Grate
- Brushed Nickel Faucet w/Pull-out Sprayer
- 12v Refrigerator • 3-Burner Cooktop w/Oven
- Decorative Backsplash

BATHROOM

- Porcelain Toilet • 1-Piece Fiberglass Shower w/Extend-A-Shower Curtain • Single Lever Shower Sprayer w/Shutoff • Residential Size Medicine Cabinet w/Mirror Doors • Stainless Steel Sink • Brushed Nickel Metal Faucet
- Decorative Backsplash

TIRES/WHEELS

- Spare Tire on Gray Steel Wheel
- Hide-A-Spare - EZ Access

BEDROOM

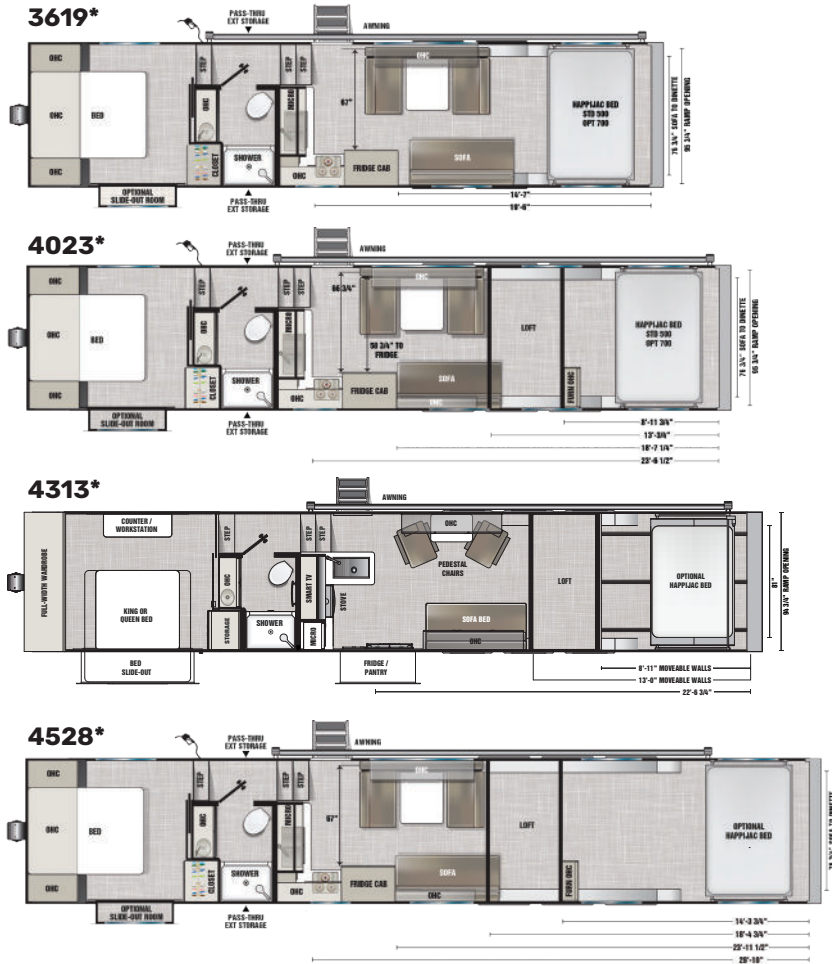
- 60 x 80 Residential Queen Bed w/Storage
- Decorative Reading Lamps • Full Length Mirror on Door • Washer Prep

ABOVE & BEYOND PACKAGE (Included)	500 SERIES PACKAGE	700 SERIES PACKAGE	500 SERIES OPTIONAL ADDS
Full Perimeter Welded Aluminum Frame (6 Sides welded together, no mechanical fasteners)	Aluminum Exterior - Silver	Aluminum Exterior - Choice of: Silver, White, Charcoal, Pewter, or Black	<ul style="list-style-type: none"> • Deck Package (Railing w/steps, vinyl roll-up screen wall at rear) • Happijac Sofa Beds (Under queen bed) • 7.0kw Generator
Axles - Torsion, EZ Lube, w/Self-Adjusting Brakes	12v Roof Vents w/Remote	12v Roof Vents w/Remote and Built-in Low Profile Rain Guard	<ul style="list-style-type: none"> • Winterization (Mandatory Oct. 1– Apr. 1) • Washington State Certification (Mandatory for Washington dealers) • CSA Certification (Mandatory for Canada dealers)
1-Piece Aluminum Roof	Mill Finish Exterior Trim	Black Exterior Trim	700 SERIES OPTIONAL UPGRADES <ul style="list-style-type: none"> • Dinette w/4 Folding Chairs (IPO sleeper benches) • King Bed (IPO queen) • Tankless Water Heater - LP (IPO 10gal gas/ electric) • Energy Package 2000 (400 Watts solar, 2000 watt inverter, 30 amp mppt charge controller – IPO 1000) • Energy Package 3000 (800 Watts solar, 3000 watt inverter, 60 amp charge controller, 400 amp hours lithium battery – IPO 1000) • Slideout – Bedroom Window Seat (N/A 4313)
4000# Rated Ramp Door	Large Tinted Windows	Frameless Dual Pane Tinted Windows	
Low Angle Ramp for Easier Loading	(1) Scene Light (By entry door)	(2) Scene Lights (Curb side)	700 SERIES OPTIONAL ADDS <ul style="list-style-type: none"> • Deck Package (Railing w/steps, vinyl roll-up screen wall at rear) (N/A w/3-season room) • Enclosed 3-Season Patio Room w/Steps (N/A w/deck package) • Vinyl Roll-Up w/Windows & Screens at Rear • Slider Tray in Pass-through Storage • Ladder (To roof) • Power Awning w/Scene Lights Road Side • Exterior Shower • 2" Expanded Foam Insulation Under Floor (R-13) • Happijac Bed- Residential Queen, w/Ladder • Happijac Sofa Beds (Under queen bed) (Only w/Happijac bed option) • 30", 45", or 72" Fold Down Table (Fits in furniture track system) • Additional 6' Sleeper Sofa(s) • Pedestal Chair(s) Recline & Swivel • Overhead Cabinet(s) in Garage • Single Or Triple Stud Tie Downs for Airline Track • TV in Bedroom • 7.0kw Generator • Battery(s) - Lithium 100 Amp Hour • Back-up Camera • Cell Signal Booster • Winterization (Mandatory Oct.1– Apr.1) • Washington State Certification (Mandatory for Washington dealers) • CSA Certification (Mandatory for Canada dealers)
Extruded Aluminum Floor - Garage & Kitchen w/Removable Woven Vinyl Fitted Floor Covering	Linen Décor Package - Beige Walls, White Countertops, Pewter Cabinets OR Cashmere Décor Package - Gray Walls, Black Countertops, Silver Cabinets	Interior Wall Color - Choice of: Beige or Gray	
Composite Flooring in Bed, Bath, Hall w/Woven Vinyl Floor Covering (No wood)	Insulated Walls	Cabinets - Choice of: Silver, White, Charcoal, Pewter, or Black	
Dimmable Ceiling Lights Throughout	5000# Capacity Tie Down Rings in Floor	Countertops - Choice of: White or Black	
Composite Wall Panels (No wood)	Happijac Bed - Residential Queen Mattress w/Ladder	Upgraded E.P.S. Wall Insulation (R-7)	
Residential Solid Surface Countertops	Tires on Aluminum Wheels w/Stainless Steel Lug Nuts	Airline Track Tie Down System - Recessed in Floor	
50 Amp Distribution Panel - 120v Output w/12v Converter		Configurable Furniture Track System for Dinettes, Sofas, Tables (Ability to change floorplan)	
50 Amp Shore Cord & Motorbase Plug		Adjustable Shelving in Cabinets (Where applicable)	
ALL WEATHER PROTECTION PACKAGE (Included)		Goodyear Tires on Premium Aluminum Wheels	
Enclosed Underbelly w/ Radiant Barrier		Skirting (Ground effects)	
12V Heat Pads on water and Waste Tanks		Skid Plates	
12V Heat Tape on Water Lines Under Floor		Second Fuel Tank, Isolated (4023, 4528)	
Ducted Air Conditioning			
Ducted Furnace			



PLA 4023

Items below can be moved anywhere in the 700 Series garage area



MODEL	3619	4023	4313	4528
Exterior Length (Includes hitch)	37' 3"	41' 3"	44' 9"	46' 3"
Exterior Height (Includes A/C)	13' 5"	13' 5"	13' 5"	13' 5"
Exterior Width	8' 6"	8' 6"	8' 6"	8' 6"
Rear Opening Width	96"	96"	96"	96"
Rear Opening Height	90"	90"	90"	90"
GVWR	16,800 lbs	21,000 lbs	21,000 lbs	21,000 lbs
Estimated Base Model Weight	10,000 lbs	11,250 lbs	TBD	13,000 lbs
Estimated Hitch Weight w/o Gen	2750 lbs	3000 lbs	TBD	3500 lbs
Estimated Hitch Weight w/ Gen	3050 lbs	3300 lbs	TBD	3800 lbs
Estimated Carry Capacity	6800 lbs	9750 lbs	TBD	8,000 lbs
Axle Size	2 x 7000 lbs	3 x 6000 lbs	3 x 6000 lbs	3 x 6000 lbs
Tire Size	235/80R16G	235/80R16G	235/80R16G	235/80R16G
Fresh Water Capacity	200 gal	200 gal	200 gal	200 gal
Gray Water Capacity	90 gal	90 gal	90 gal	90 gal
Waste Water Capacity	45 gal	45 gal	45 gal	45 gal
Water Heater LP Gas/Electric	10 gal	10 gal	10 gal	10 gal
Gasoline Capacity	36 gal	36 gal (72 gal 700 Series)	72 gal	72 gal
LP Capacity	60 lbs	60 lbs	60 lbs	60 lbs
Refrigerator	15 cu ft	15 cu ft	15 cu ft	15 cu ft
Cooktop/Stove	3-Burner Gas w/Oven	3-Burner Gas w/Oven	3-Burner Gas	3-Burner Gas w/Oven
Furnace	35,000 BTU	35,000 (& 25,000 BTU 700 Series)	35,000& 25,000 BTU	35,000 & 25,000 BTU
Awning	25 ft	25 ft	25 ft	25 ft

*700 Series shown – 500 Series does not include the loft. 4528 is not available in a 500 Series.

The depictions of trailers in this brochure are for general information purposes only as to the trailers manufactured by ATC during the current model year. Since we continually strive to improve our products, actual products may differ and prices and specifications are subject to change without notice. Product information, specifications, photography, and promotions in this brochure may contain some features that are optional on your trailer. All capacities are approximate and dimensions are nominal. Trailer availability may be limited. ©2022 ATC R12/22