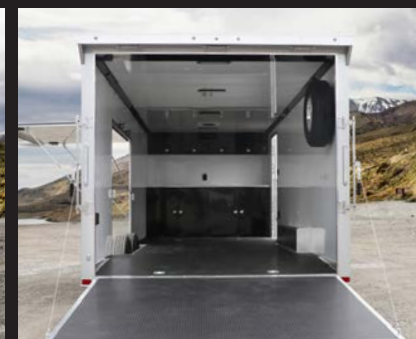


Now With More Standard Features

Our essential basic car hauler, the Raven Limited comes ready to roll with more new standard features and everything you need to get your vehicle securely down the road. Raven's lightweight, high-quality aluminum frame is built to exacting standards that ensure it will hold its value for the long haul.



Shown with optional equipment



READY TO GO

Our Raven Limited Car Hauler has new standard features that make it an exceptional value. It's outfitted from the start for hauling your race car, a car-show treasure or motorcycles and ATVs for a weekend outing. Our most popular car hauler, the Raven Limited is a sturdy, dependable way to transport your vehicles. Raven can also be ordered and equipped with optional packages to more precisely fit your needs.

Details and options at [ATctrailers.com](https://www.atctrailers.com)

STANDARD ON RAVEN LIMITED CAR HAULERS:

- Full perimeter aluminum frame with all-tube aluminum construction.
- 16" on-center floor, wall and roof crossmembers.
- Torsion axles and electric brakes on all axles.
- 3/4" engineered subfloor.

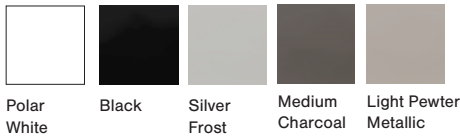
(See reverse side for a complete list of features and options.)

BASE MODELS

8.5' x 20' w / 3500#
 8.5' x 20' w / 5200#
 8.5' x 24' w / 5200#
 8.5' x 28' w / 5200#

COLORS

Exterior



CABINETS

(Cabinets available only with Deluxe Package)

Package 1 - Upper Only - White

Package 2 - Straight Lower, Upper - White

Package 3 - L-base Lower, 36x36 Gen Door, Upper - White

OPTIONS

88" x 66" Premium Escape Door - Removable Wheel Well

Screwless Aluminum Ceiling - White

(Black Cove and Spring Box)

Insulated Wall and Ceiling - (requires alum ceiling)

STANDARD FEATURES

Frame

Full Perimeter Aluminum Frame
 All-Tube Aluminum Construction
 Extended Tongue
 Torsion Axles
 Electric Brakes - All Axles
 Breakaway Battery Kit
 7- Way Trailer Plug
 2 5/16" Ball Coupler
 Safety Chains
 5000# Manual Crank Jack
 16" O/C Floor Crossmembers
 16" O/C Wall Crossmembers
 16" O/C Roof Studs
 Smooth Aluminum Wheel Boxes
 Spread Axle Design w Individual Fenderettes
 Grey Mod Wheels w/ Radial Tires - Nitro Fill
 Winch Plate
 Spare Tire Wall Mount Backer

Exterior

.030 Aluminum Skin - Screwless
 One-Piece Aluminum Roof
 3" Upper Rub Rail Trim
 3" Lower Rub Rail Trim
 LED Clearance Lights
 LED Tail Lights
 24" ATP Stoneguard
 36" 110 Series Door w/ Slam Latch
 Cast Corners w SS Vertical And Horizontal
 Rear Ramp Door w Spring Assist - Engineered Floor
 Transition Flap - Engineered Floor
 Aluminum Bar Locks - Rear Ramp Door
 Rear Skid Plates

Interior

3/4" Engineered Subfloor
 (2) 12v LED Dome Lights w Switch
 (1) Roof Vent w Maxxair Cover
 7.0' Interior Height
 (4) 5000# Recessed D-Rings
 4' Beavertail -(3' for 20' trailer)
 3/8" Engineered Wood Walls
 Open Stud Ceiling w Mill Finish Cove

Flow-Through Vents

Upgrade to Aluminum Wheels

Spare Tire on Steel w Wall Mount

Spare Tire on Alum w Wall Mount

PACKAGES

Exterior Package

- Perimeter Skirting With Reverse Beavertail
- 4" Trim - Upper and Lower
- Rear Spoiler - Mill Finish w/ 3 LED Lights
- Aluminum Wheels with Radial Tires

Interior Package

- TPO - Black Coin Floor
- TPO - Black Coin Ramp and Trans Flap
- Screwless Aluminum - Walls and Ceiling - White (Black Cove & SP Box)

Deluxe Package

- Perimeter Skirting with Reverse Beavertail
- 4" Trim - Upper and Lower
- Rear Spoiler - Mill Finish w/ (3) LED Lights
- Radial Tires on Aluminum Wheels
- TPO - Black Coin Floor
- TPO - Black Coin Ramp and Trans Flap
- Screwless Aluminum - Walls and Ceiling - White (Black Cove & SP Box)
- Required Choice of Cabinet Package - See Options Above
- 30 Amp Breaker w/ 60 Amp Converter
- 12V Fuse Panel - INTELI-PWR
- (4) Rectangular - LED Ceiling Lights
- (3) Interior GFI Outlets - (1) Exterior GFI Outlet
- A/C Prep
- Slide In/Out Aluminum Step
- 12V AGM Battery